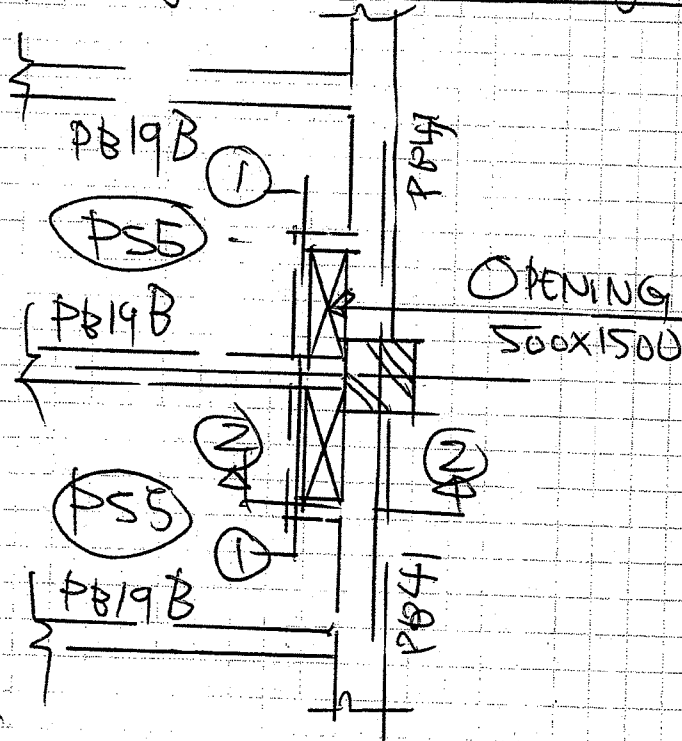


CALCULATION SHEET

PROJECT	LCM	JOB ID	
SUBJECT	Floor opening @ GL (P6)	DESIGNED	PSJ
		CHECKED	May '06
		PAGE	
		SHEET	

Floor Opening 500x1500 Along GL (P6)



Long Sect: ①-① : 150x500

Sect: ②-②

$$DL = 180 \text{ kg/m}$$

$$Wall = 900 "$$

$$\underline{1080 "}$$

$$DL = 180 \text{ kg/m}$$

$$Wall = 900 "$$

$$Slab = 2140 "$$

$$\underline{3920 "}$$

$$M = \frac{1}{8} \times 1080 \times 1.5^2$$

$$= 303 \text{ kgm}$$

$$M = 0.5 \times 3920 \times 0.5^2 + 810 \times 0.5$$

$$= 403 \text{ kgm}$$

$$A_s = 0.50 \text{ cm}^2 \text{ 2\#16 (T\&B)}$$

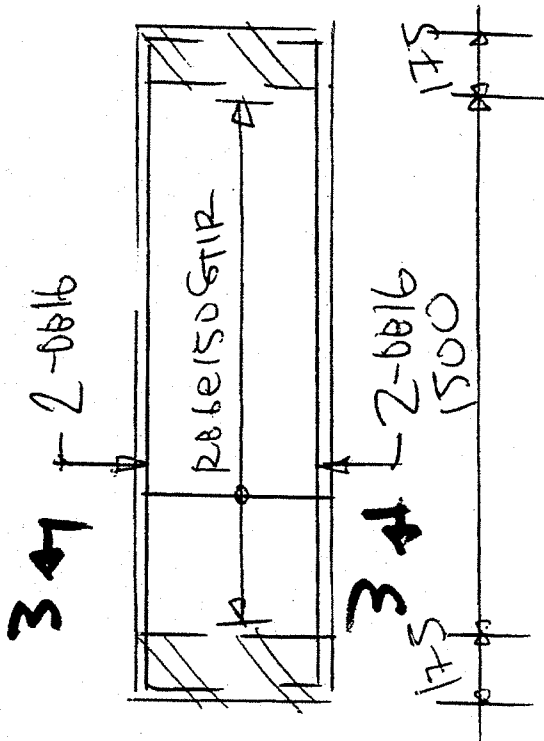
$$A_s = 0.50 \text{ cm}^2 \text{ 2\#16 (T\&B)}$$

$$V = 810 \text{ kg}$$

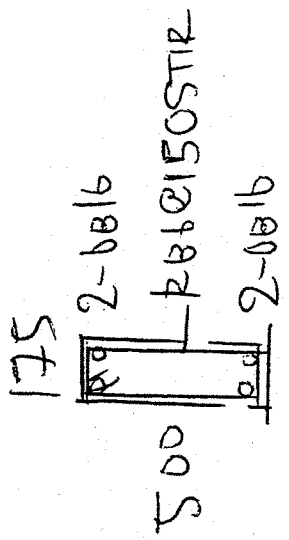
$$V = 2420 \text{ kg}$$

$$C = 3275 \text{ kg. 2\#16 150 STR}$$

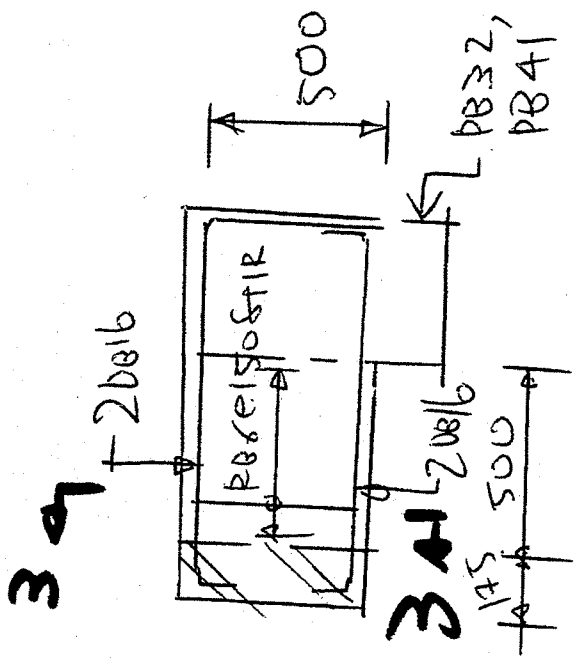
$$C = 3275 \text{ kg. 2\#16 150 STR}$$



SECTION 1-1



SECTION 3-3



SECTION 2-2