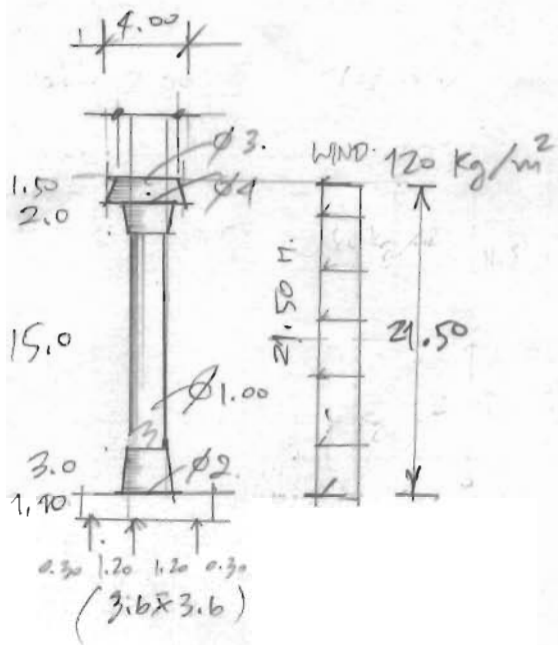


အလုပ်အကိုင်အတွက် WATER TANK ပုံစံကို

၂၃  
၂၀

အလုပ်အကိုင်အတွက်: မြေအောက် အောက်ဖွဲ့အား ၆၇၅၂

(၇၂)



-  $W = 30 \text{ m}^3 = 30,000 \text{ kg}$   
 -  $D = 5,000 \text{ kg}$

$SF = \frac{M_{REACT}}{M_{act}} > 1.5$

$M_{act} = (120 \times 1.5 \times 4 \times 20.75) + (120 \times 1 \times 20 \times 10)$   
 $= 38,940 \text{ m}$

$M_{react} = (5,000 + \frac{1}{2} \times 12 \times 67) \times 1.10 + 22,000 \times 9$   
 $= 203,000$

$S.F. = 5.2 > 1.5 \text{ OK}$

Wt. Footing + DL + WATER.

$P = (3.6 \times 3.6 \times 1.10 \times 2.40) + 5,000 + 30,000$   
 $= 69.21 \text{ TON} \rightarrow 70 \text{ TON}$

$M = 38,940 \text{ T-M}$

$E d^2 = 3 \cdot (1.5)^2 + 3 \cdot (1.5)^2 = 13.5 \text{ MR}$   
 $\frac{4.32}{13.5}$

$P_1 = \frac{70}{9} + \frac{38,940 \cdot (1.50)}{13.50} = 13.63 \text{ TON} \oplus$

$P_2 = \frac{40}{9} - \frac{4.32}{9} = 0.08 \text{ TON} \oplus$

Moment

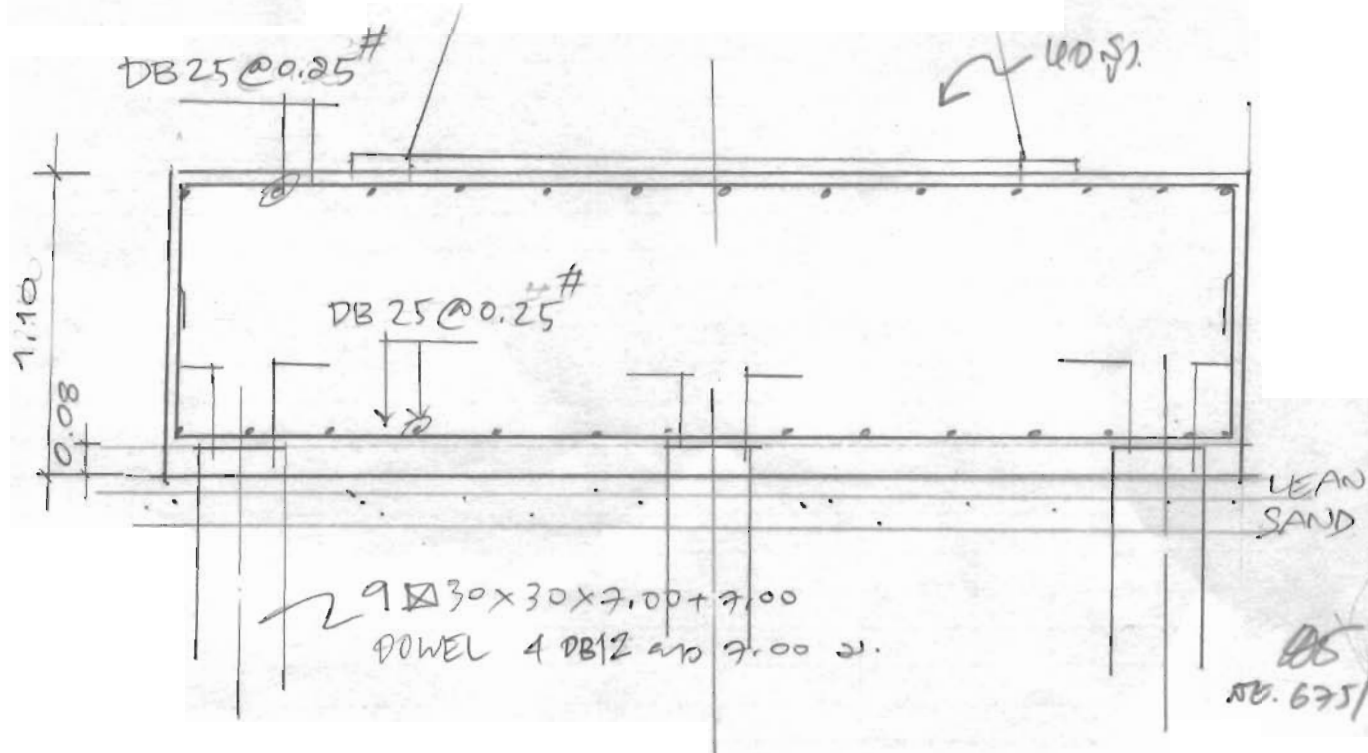
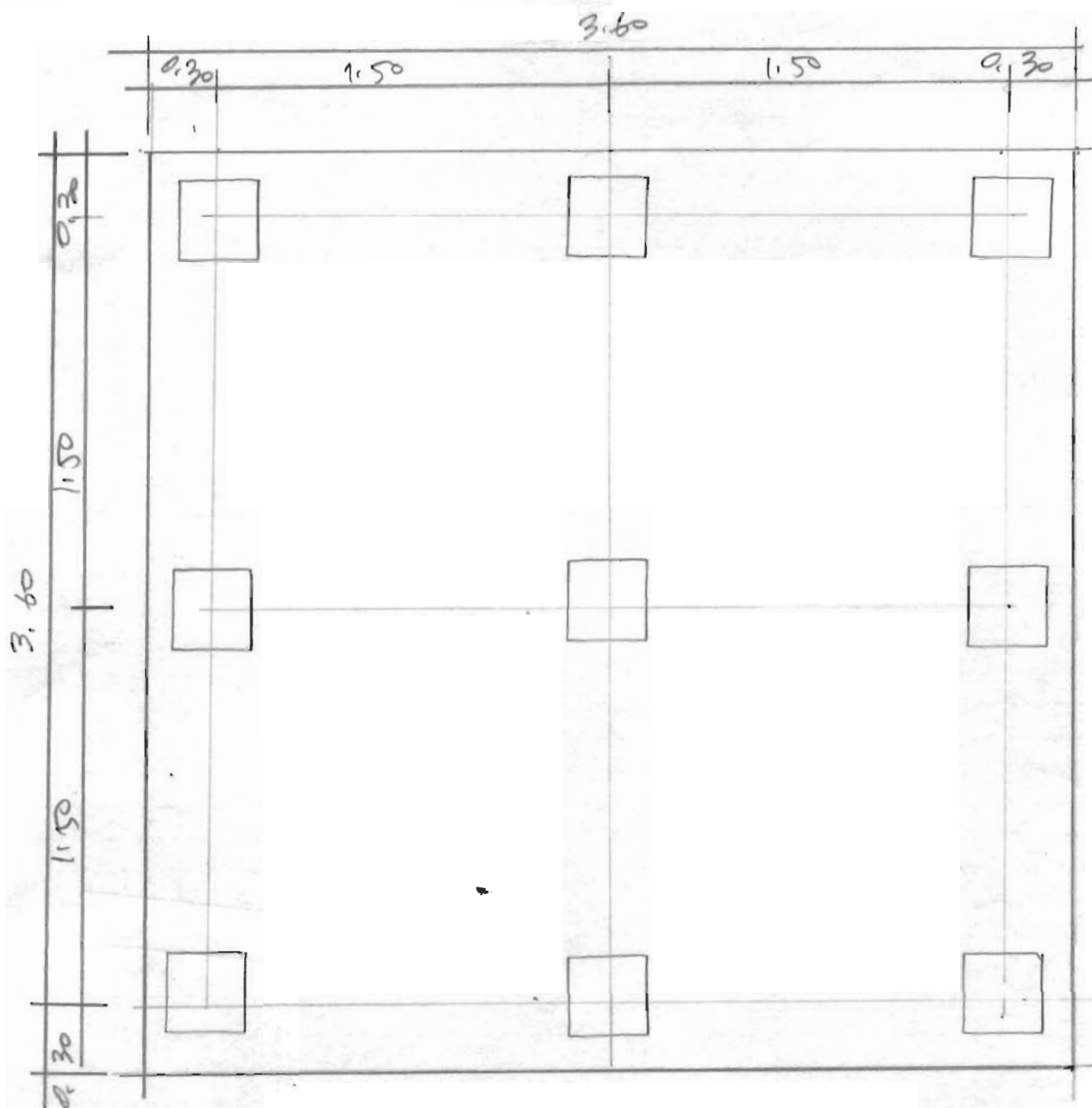
$M_1 = 3(13.63)(0.5) = 20.45 \text{ T-M}$

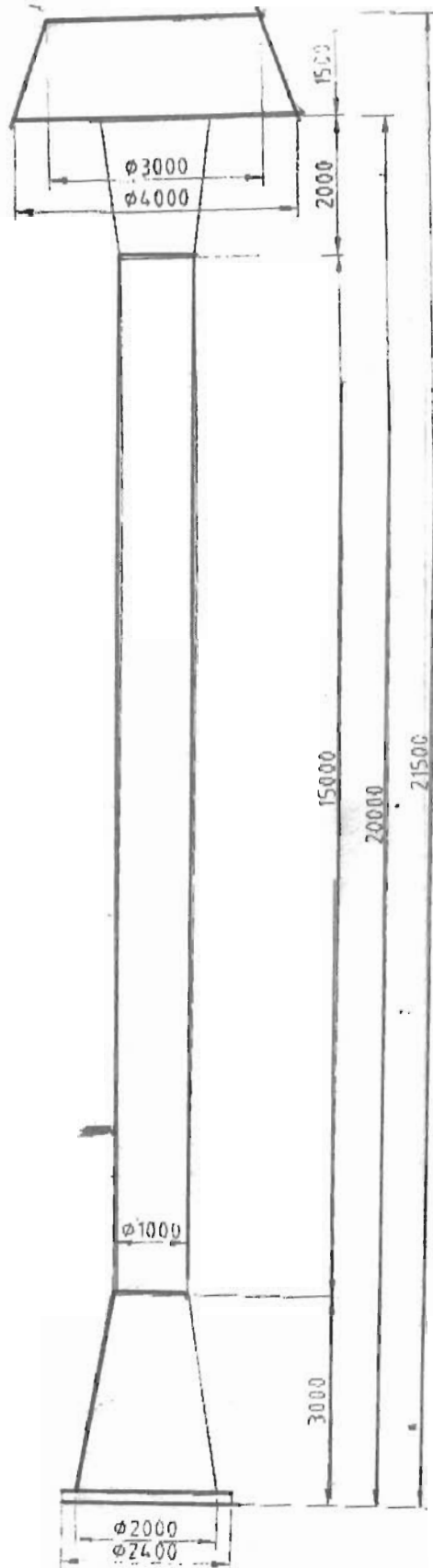
$d = \sqrt{\frac{20.45 \times 1000}{360 \times 20.541}} = 16.62 \text{ cm} \rightarrow \text{USE } 100 \text{ cm}$

$A_s = \frac{20.45 \times 1000 \times 100}{1700 \times 0.876 \times 60} = 13.73 \text{ cm}^2$   
 $A_{s \text{ temp}} = \frac{0.0025 \times 100 \times 110}{2} = 13.75 \text{ cm}^2$   
 } USE DB25 @ 0.25 #  
 (  $A_s = 19.69 \text{ cm}^2$  )

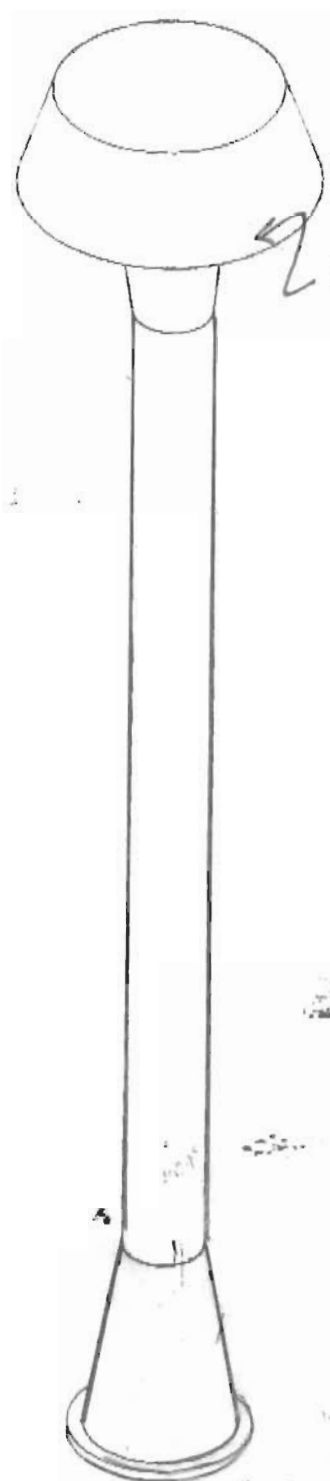
အောက်ဖွဲ့အားကိုးကွယ်ရန် DOWEL BAR ကို အောက်ဖွဲ့အားကိုးကွယ်ရန် WATER TANK  
 ကို အောက်ဖွဲ့အားကိုးကွယ်ရန် အောက်ဖွဲ့အားကိုးကွယ်ရန်

၆၇၅၂  
 No. 6751



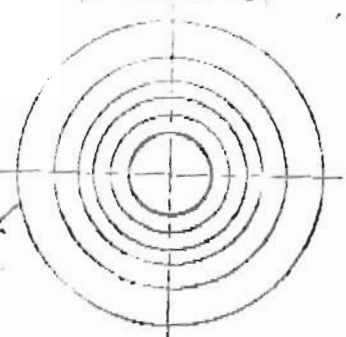


CH = 21.50 (รวมท่อ)



0 2

← 0.0127 30 M<sup>3</sup>



006751

DRAWN	CHECKED	APPROVED	PROJECTION 150-F
SIAM NAVATARN CO., LTD. 39/3 Moo 5 Sanambinnun, Tha-sai, Nonthaburi 11000 Tel. 0-2525-4101-6 Fax. 0-2525-4180			DIM: Millimeter TOLERANCE MATERIAL SHEET TOTAL SCALE: 1:100 PAPER SIZE: A4 DATE: 19/12/56 FILE DRAWING NO.
PLANT	MACHINE		TITLE
WATER TANK			