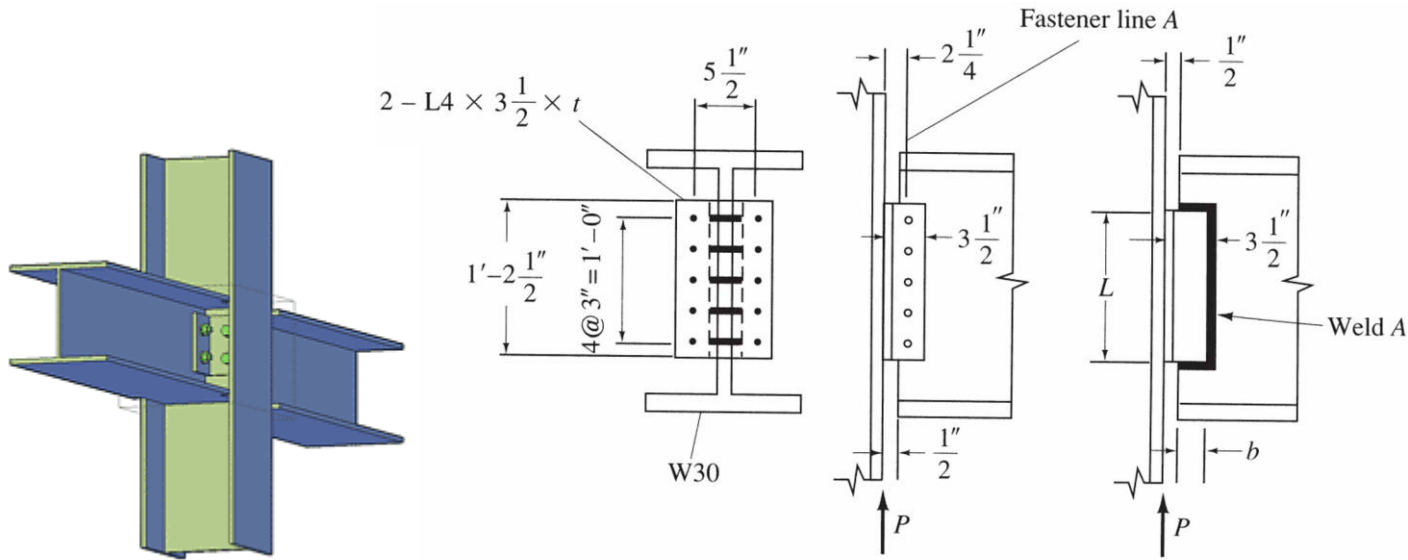
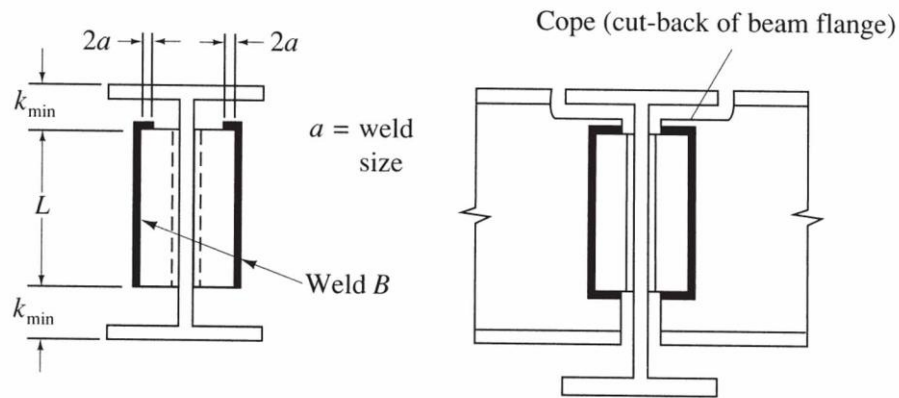


การต่อโครงสร้างเหล็ก
Steel Connection

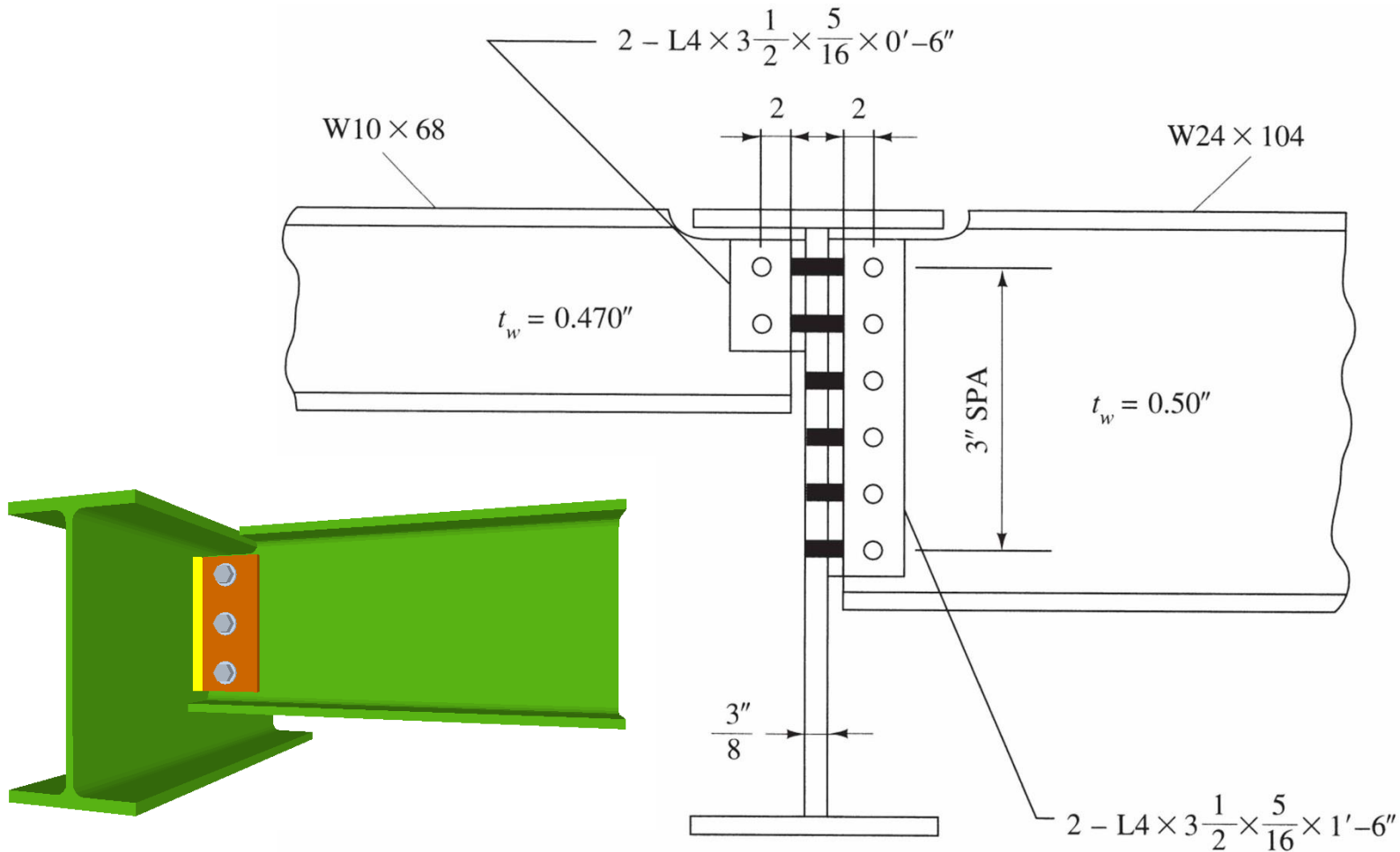


OSL & NSL Bolted Connection

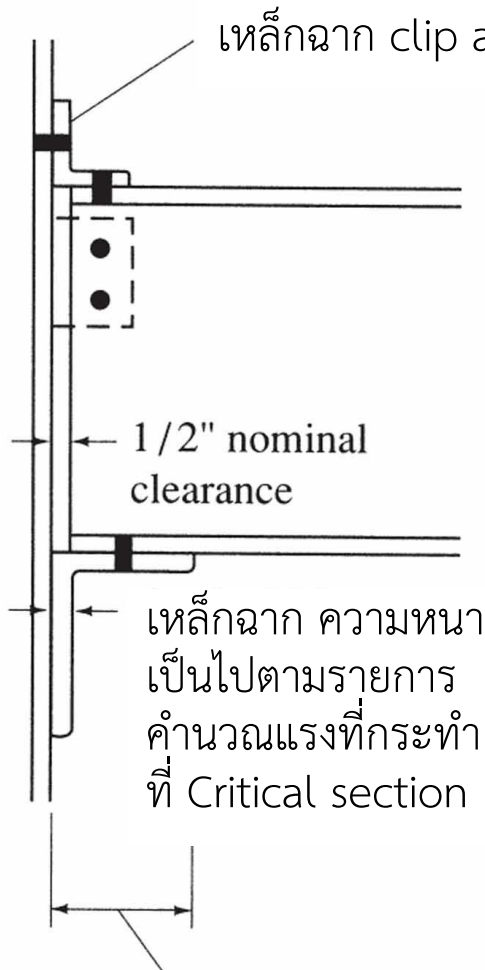
OSL & NSL Welded Connection



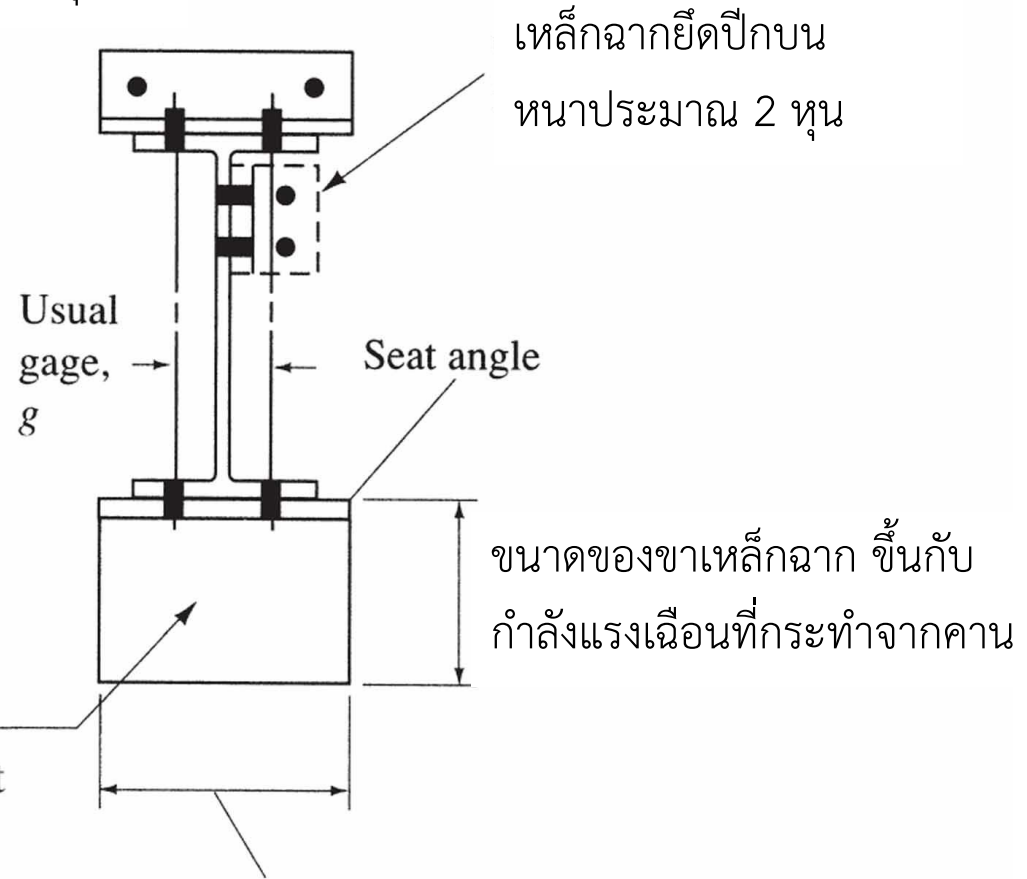
Double Angle Shear Connection



Beam-to-Girder Double Angle Shear Connection



ขนาดของขาเหล็กฉาก ขึ้นกับกำลังแรงกดที่ กระทำจากคาน

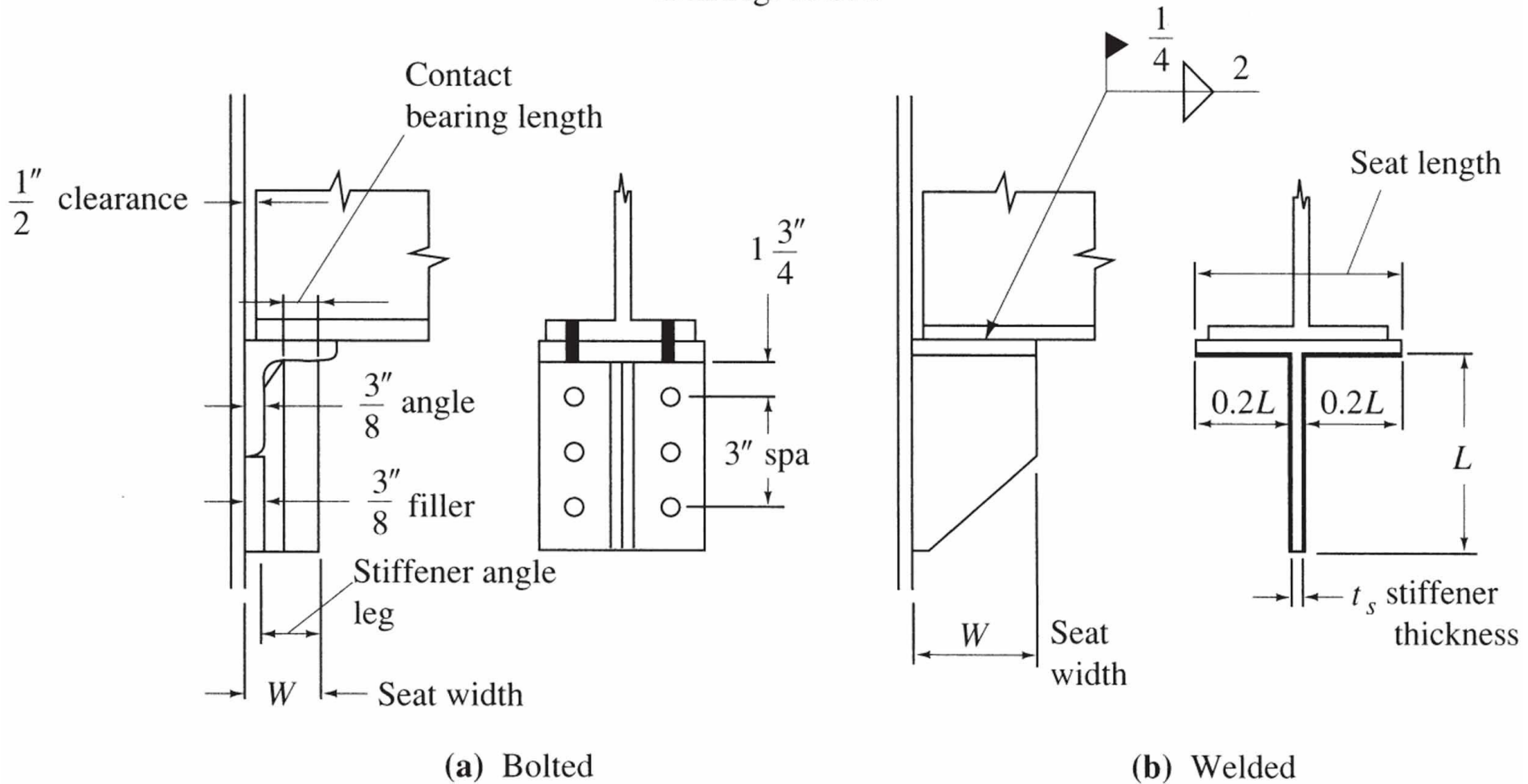


See AISC p. 10-84 for types A through F of bolt arrangement

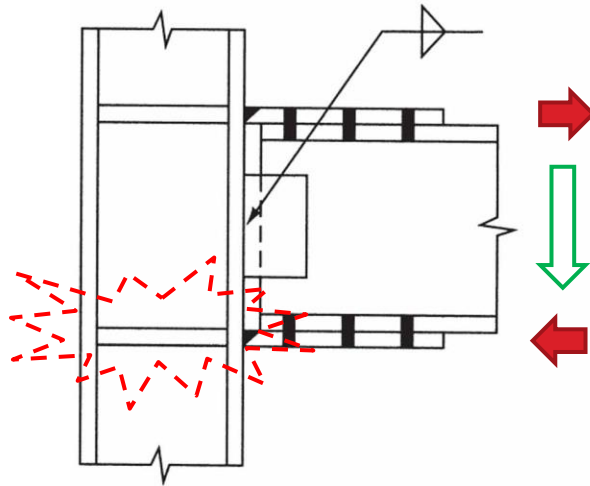
ความยาวของเหล็กฉาก ขึ้นกับความกว้างของปีก คาน และระยะเกจ

Seated Connection

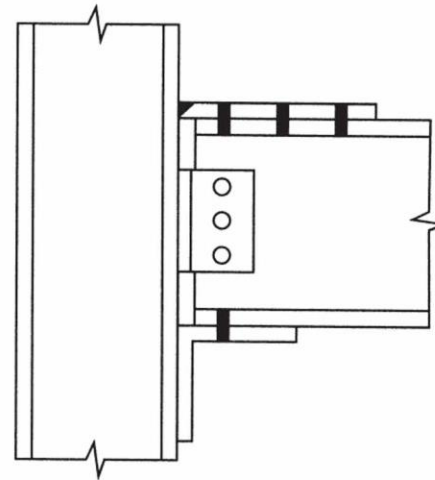
Top angles must be used,
as in Fig. 13.3.4.



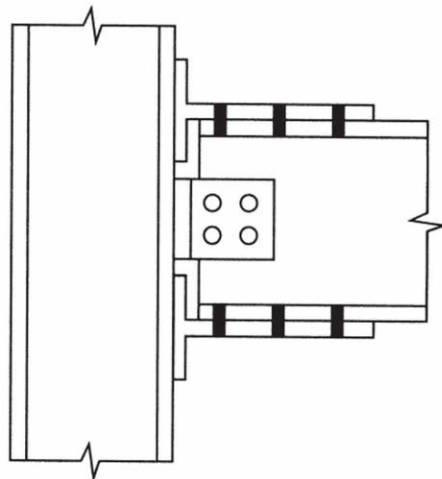
ตัวอย่าง Seated Connection ที่ต้องรับแรงเฉือนมาก



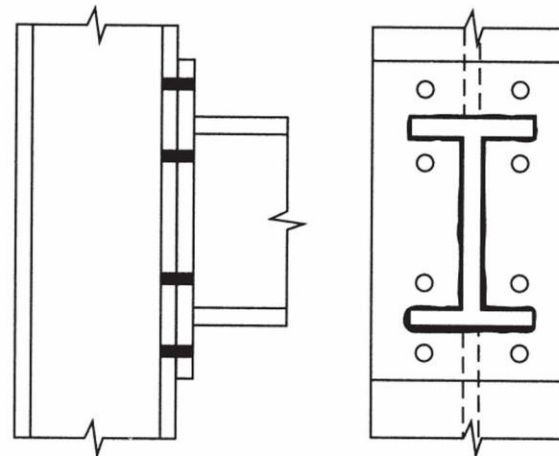
(a) Top and bottom plates



(b) Top plate and seat

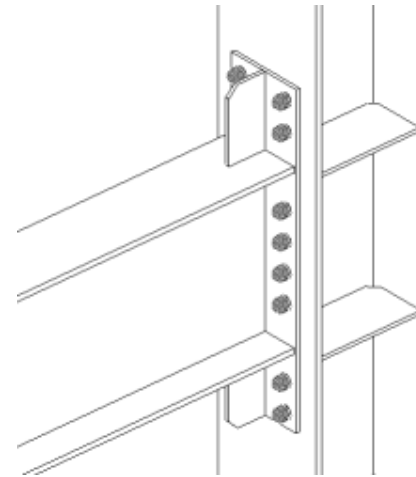
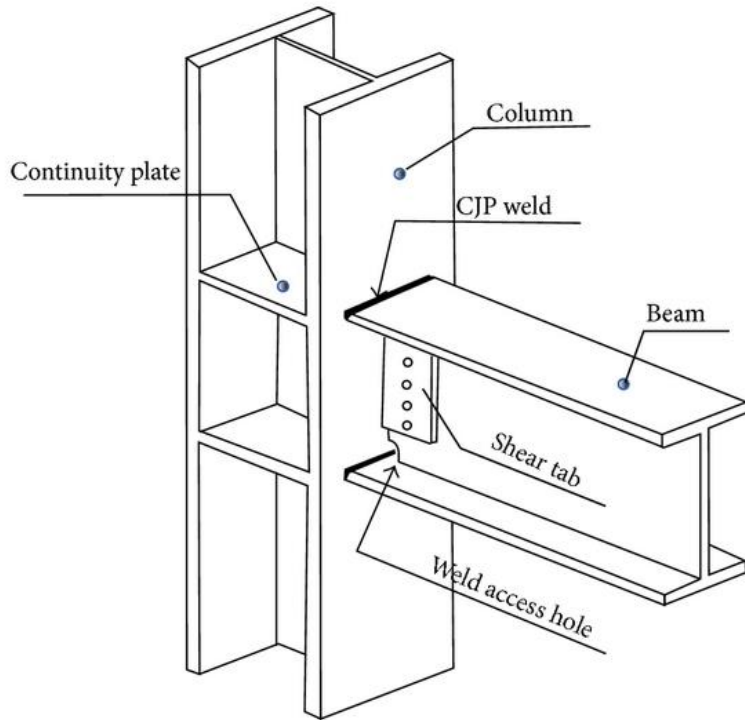


(c) Split tees, with or without web angles



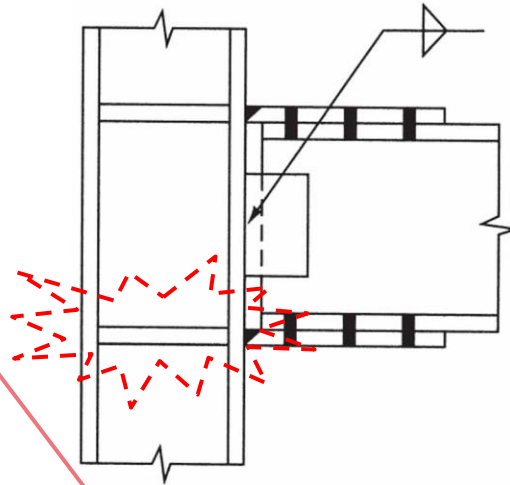
(d) Welded end plates

Moment Connection

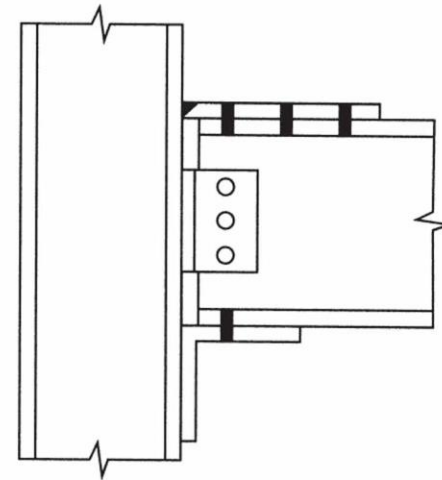


Moment Connection

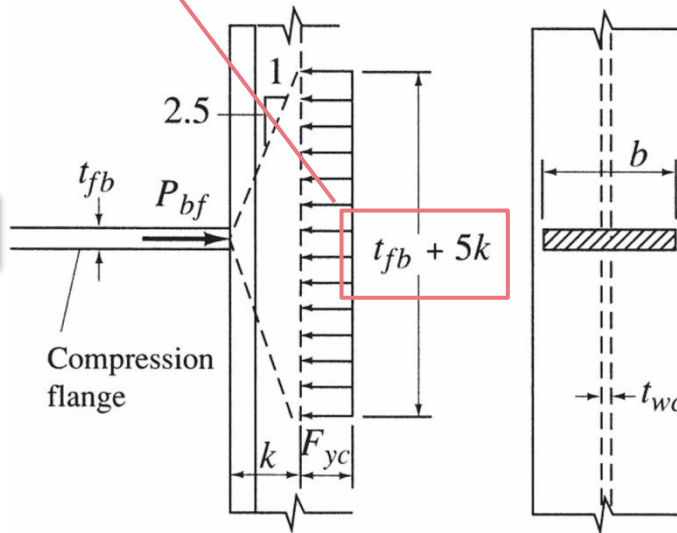
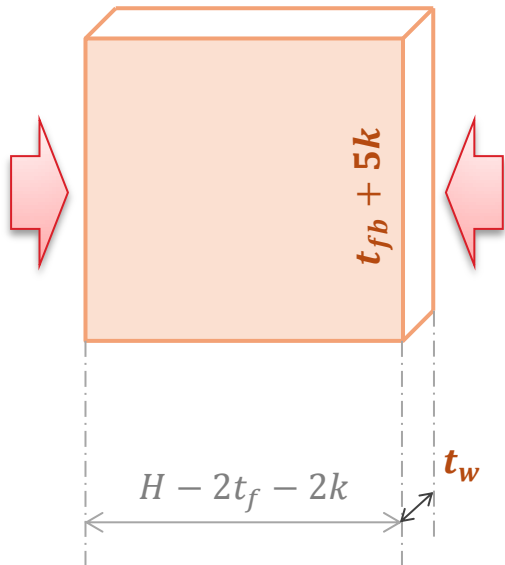
เกี่ยวข้องกับ
(column) web
yielding



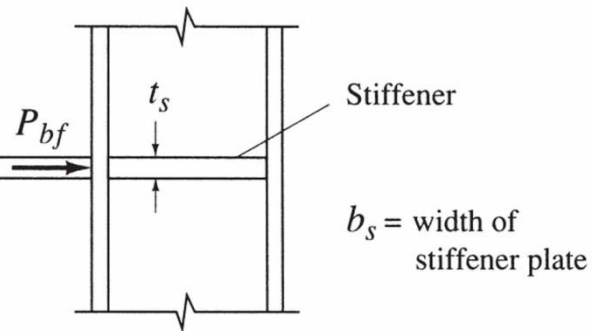
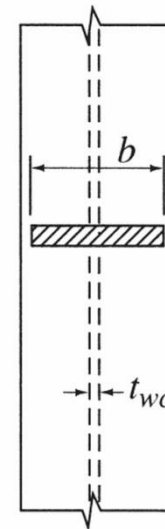
(a) Top and bottom plates



(b) Top plate and seat

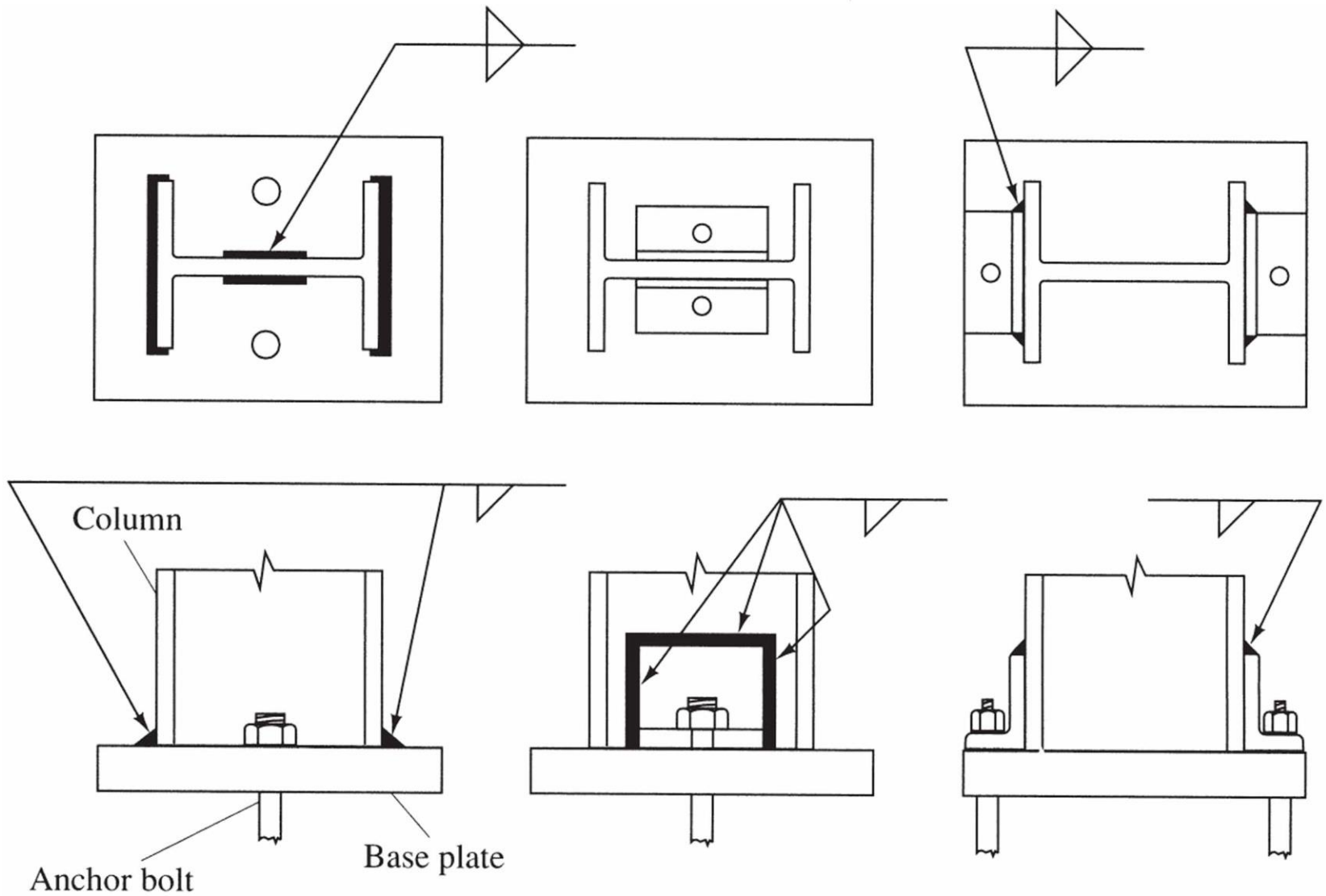


(a) Without column web stiffener

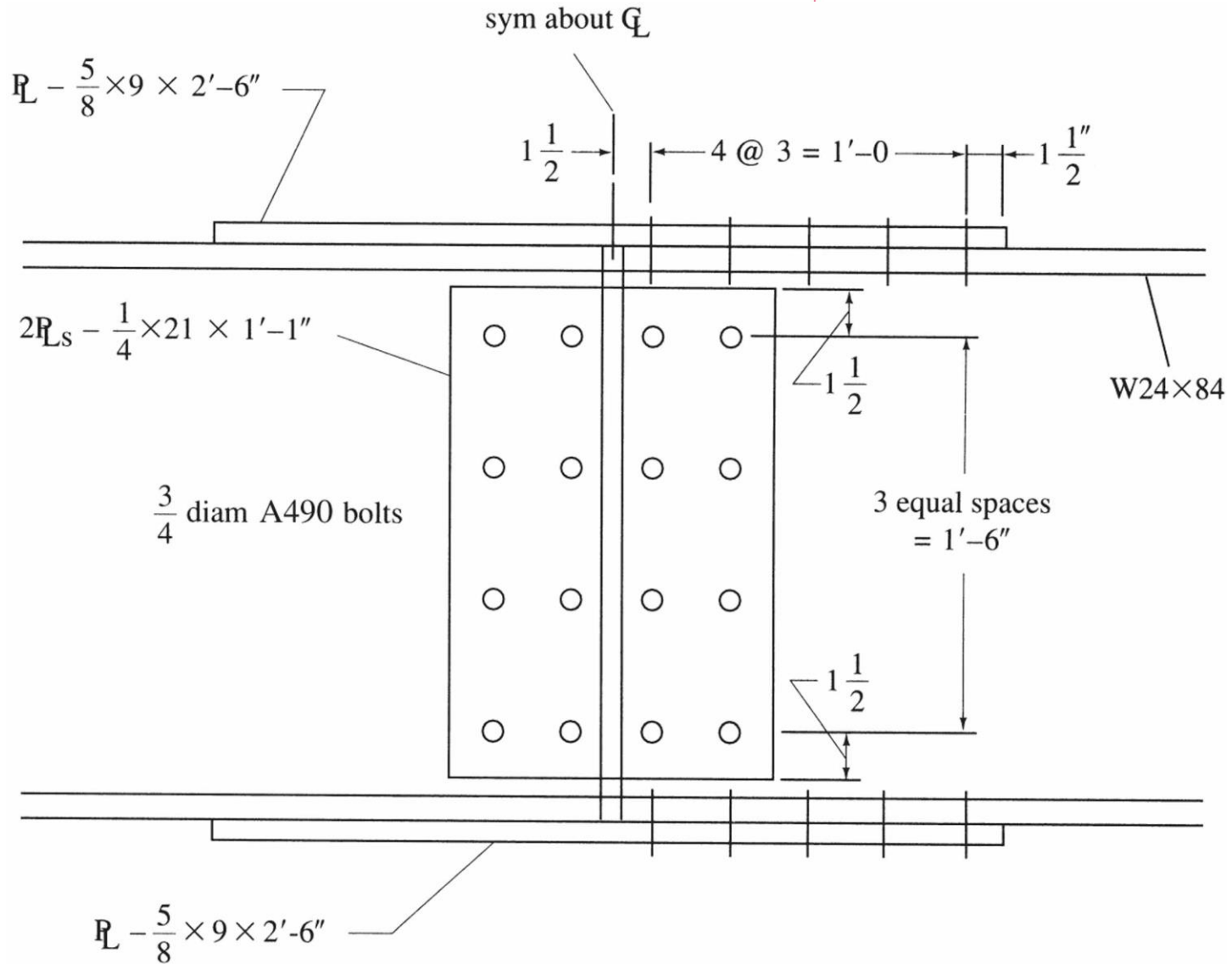


(b) With column web stiffener

Moment Connection



Column Base Connection



Beam Splice Connection